



## DESIGN-A-DIE SYSTEM USING TIPALOY METRIC TDP PINS, CAPS, LOWER AND UPPER ELECTRODES (STANDARD METRIC THREADS)

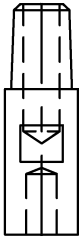
TDP pins are designed for auto feeding of projection weld nuts. They can also be used for manual load operations. The pins are manufactured from a special steel alloy and coated with a proprietary process which hardens the alloy and insulates the surface. The surface imparts a hard surface to protect the pin from wear.

TCN caps are manufactured from RWMA Class 2 material. They also are available in RWMA Class 3 or T10W material.

TDH (tapered) and TDT (threaded) Bodies with air ports are available for the TCN caps and TDP pins.

### PROJECTION NUT WELDING

TNFD UPPER ELECTRODE



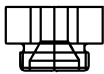
PROJECTION WELD NUT



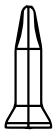
SHEET METAL



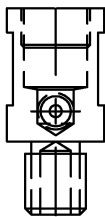
TCN HEAD



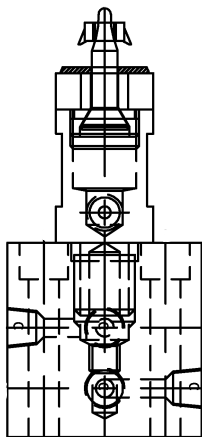
TDP PIN



TDT BODY

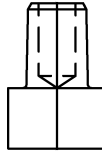


ASSEMBLY



### PROJECTION NUT WELDING

TR UPPER ELECTRODE



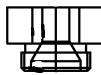
PROJECTION WELD NUT



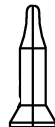
SHEET METAL



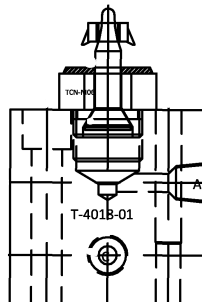
TCN HEAD



TDP PIN

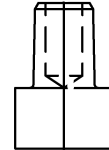


ASSEMBLY



### PROJECTION NUT WELDING

TR UPPER ELECTRODE



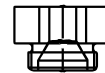
PROJECTION WELD NUT



SHEET METAL



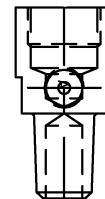
TCN HEAD



TDP PIN



TDH BODY



TIPALOY TAPERED HOLDER

